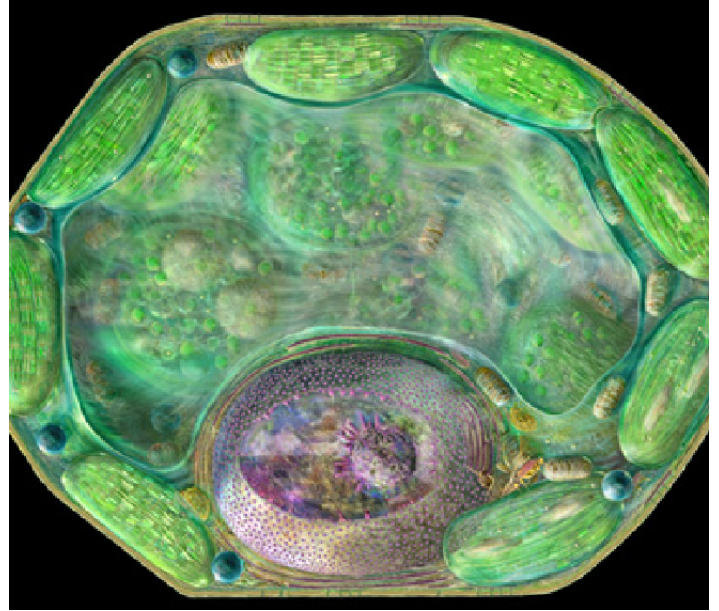


The cells of plants include several parts, such as the cell body, cytoplasm, mitochondria, nucleus, vacuole, cell membrane, cell wall, and chloroplasts. Only plant cells have plant walls and chloroplasts.



Key vocabulary

cell

A basic, microscopic part of an animal or a plant.

organelle

Small structures in cells that help it function.

nucleus

The central part of an atom.

chromosome

The part of a cell that carries the genes that give living things their special characteristics. Chromosomes determine your hair color, eye color, size, etc., which you inherit from your parents.

reproduce

When animals reproduce, they breed and produce offspring.

Related articles



Animal Cells

Just like plant cells, animal cells are workaholics. They do all kinds of jobs in the body to keep things running smoothly.



Photosynthesis

When people get hungry, they go to a restaurant or their refrigerator. Not plants! They make their own food using photosynthesis.



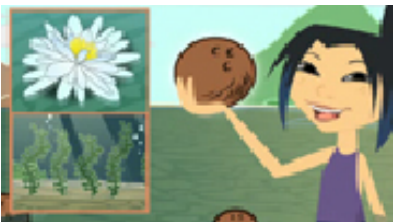
Plants with Seeds

Seeds are amazing things! Read this section, and you will never look at your sunflower seeds the same way again.



Plants without Seeds

Did you know that plants do not all have seeds? Some plants reproduce by other means, and they get very creative!



Plant Adaptations

When the going gets tough, plants adapt! Plants have incredible ways to adjust to their surroundings.